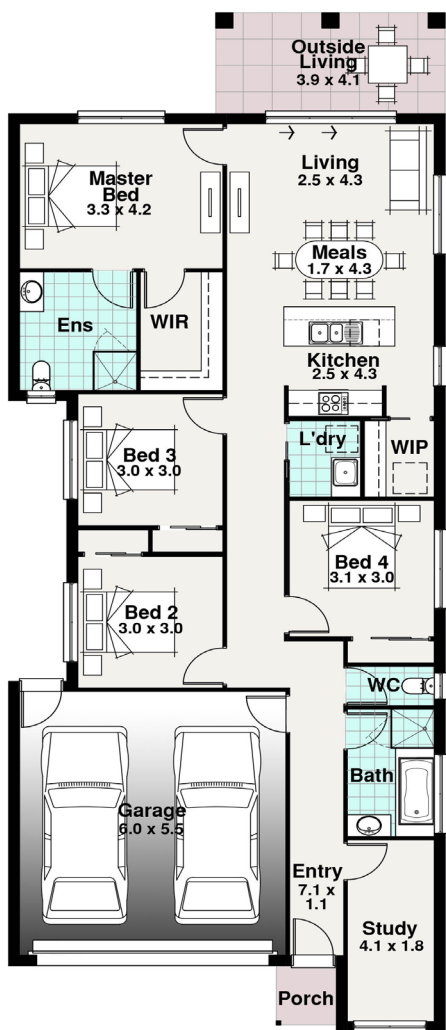




TASMAN RANGE

Coolum West Facade Pictured



BLOCK 29.00m

10.00m

- 4
- 2
- 2
- 1



SPITERI HOMES

The Sullivan

Width 9.00m
Length 23.15m

Residence	133.15	m ²
Porch	2.09	m ²
Garage	36.69	m ²
Outside Living	10.88	m ²
TOTAL	182.81	m²
	19.67	sq

The Sullivan

Another design made to suit very narrow blocks and could be modified as a boundry to boundry 9m design. Still featuring 4 bedrooms, a walk in pantry, 2 bathrooms and an outside living is a big plus.