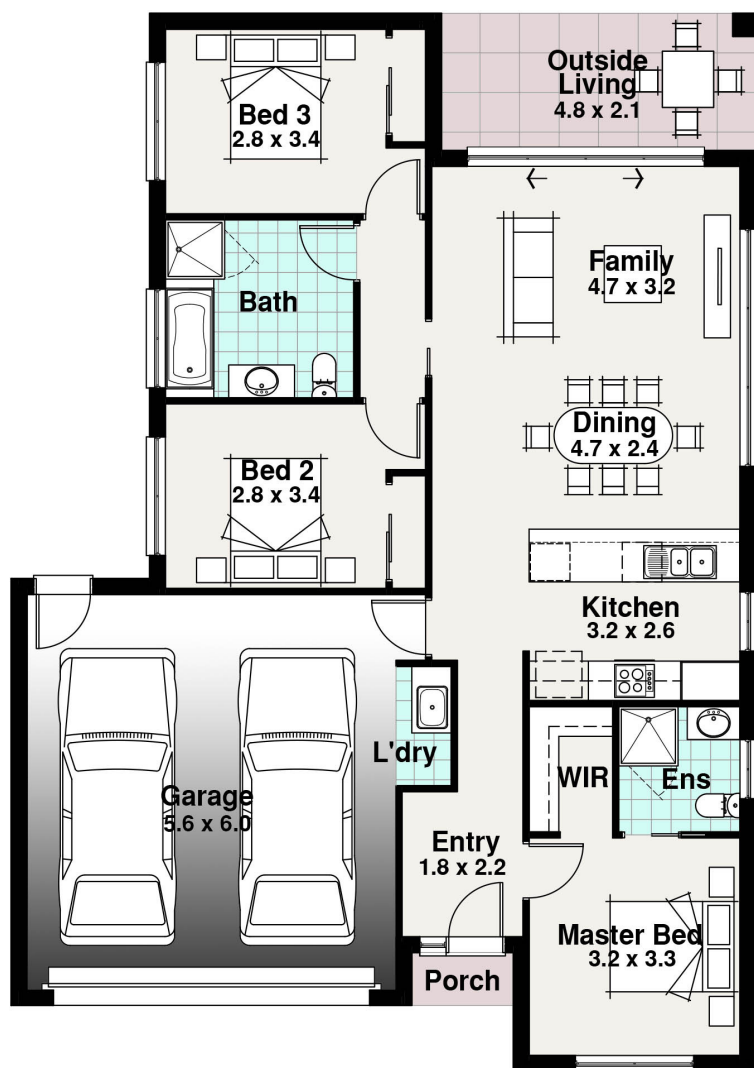




Standard Facade Pictured



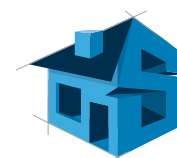
# TASMAN RANGE



BLOCK 25.00m

13.60m

- 3
- 2
- 2
- 1



## SPITERI HOMES

# The Salamanca 2

**Width**      **Length**  
**11.30m**    **16.04m**

Residence	106.95	m2
Porch	1.23	m2
Outside Living	9.92	m2
Garage	37.53	m2
<b>TOTAL</b>	<b>155.63</b>	<b>m2</b>
	<b>16.75</b>	<b>sq</b>

## The Salamanca 2

Definitely for the savvy First Home Buyer or Empty Nester, the smart Salamanca offers 3 bedrooms and a European Laundry so not to waste any space in your budget. The Salamanca 2 is designed for those looking to get in to their first home or can be a smart design for the Couple who would like to scale down.

Block sizes are estimates only and based on standard Developer setback and Rescode setback of 4 - 5m front only and 3m rear setback. Plans, facades and specifications vary depending on zone and region. All designs are priced to the traditional facade associated with the range, all other facades are considered upgrades and will incur charges unless otherwise specified.