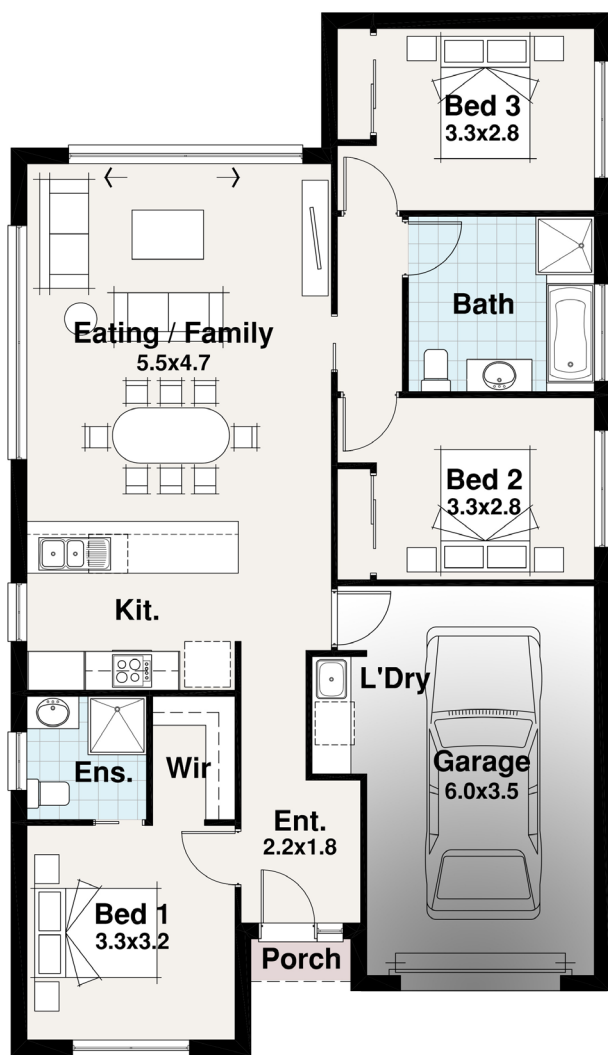








Gregale Facade Pictured

# TASMAN RANGE



BLOCK 25.00m

10.60m

-  3
-  1
-  2
-  1



**SPITERI HOMES**

## The Salamanca 1

**Width** 9.20m  
**Length** 16.04m

Residence	106.95	m2
Porch	1.23	m2
Garage	23.94	m2
<b>TOTAL</b>	<b>132.13</b>	<b>m2</b>
	<b>14.22</b>	<b>sq</b>

### The Salamanca 1

Definitely for the savvy First Home Buyer or Empty Nester, the smart Salamanca offers 3 bedrooms and a European Laundry so not to waste any space in your budget. The Salamanca is designed for those looking to get in to their first home or can be a smart design for the Couple who would like to scale down.