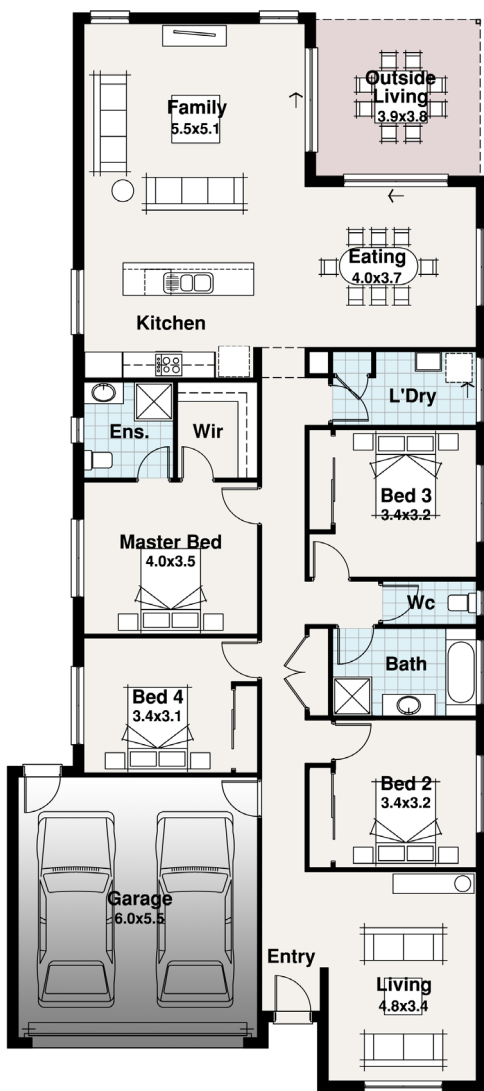








Franklin Facade Pictured

TASMAN RANGE



BLOCK 31.80m

12.20m

-  4
-  2
-  2
-  2



SPITERI HOMES

The Port Arthur

Width 11.00m
Length 24.79m

Residence	187.73	m ²
Outdoor Living	14.73	m ²
Garage	36.26	m ²
TOTAL	238.72	m²
	25.70	sq

The Port Arthur

With 4 Bedrooms, 2 Living areas, an ample Outdoor Living area and heaps of storage the wonderful Port Arthur offers it all. With a very family orientated design everyone can enjoy their own space in this savvy design that caters for the modern household.

Block sizes are estimates only and based on standard Developer setback and Rescode setback of 4 - 5m front only and 3m rear setback. Plans, facades and specifications vary depending on zone and region. All designs are priced to the traditional facade associated with the range, all other facades are considered upgrades and will incur charges unless otherwise specified.