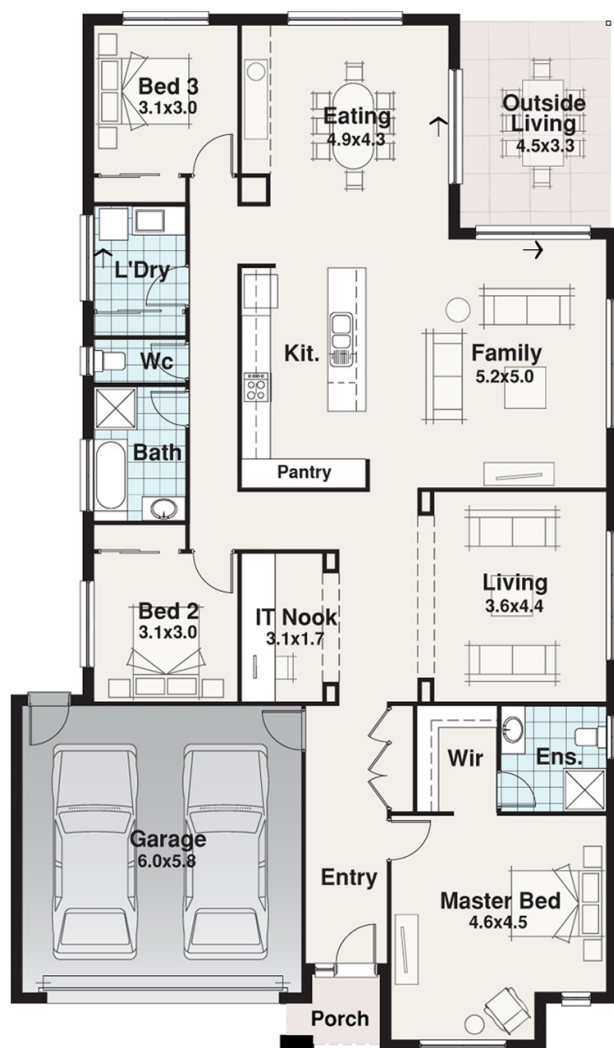








Byron Facade Pictured

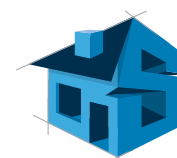
NORFOLK RANGE



BLOCK 28.00m

13.90m

-  3
-  2
-  2
-  2



SPITERI HOMES

The Orford

Width 12.70m
Length 21.72m

Residence	191.24	m ²
Outdoor Living	14.78	m ²
Garage	38.37	m ²
TOTAL	244.39	m²
	26.30	sq

The Orford

For a long time the Orford has been one of our most popular designs. A spacious 3 bedroom design with a study nook, second living area and a family area that opens into the outside living. It is quite easy to see why the Orford is so popular.

Block sizes are estimates only and based on standard Developer setback and Rescode setback of 4 - 5m front only and 3m rear setback. Plans, facades and specifications vary depending on zone and region. All designs are priced to the traditional facade associated with the range, all other facades are considered upgrades and will incur charges unless otherwise specified.