

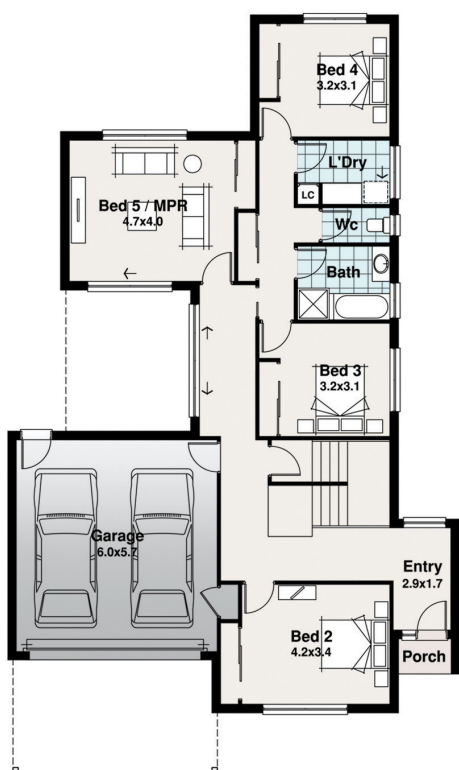


# TARKINE

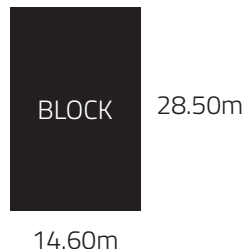
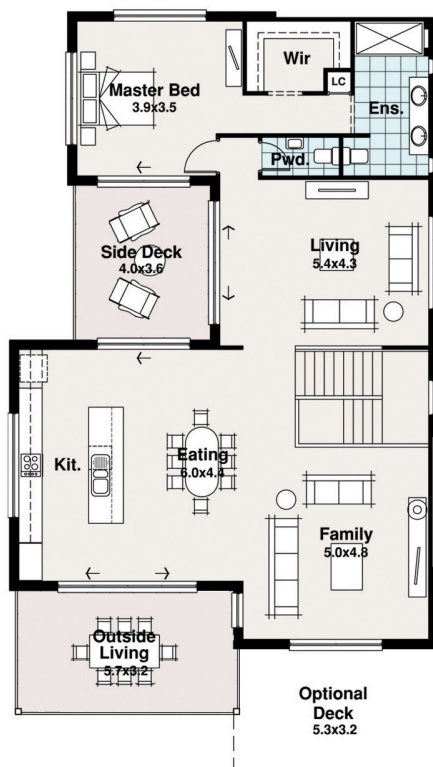
RANGE

Tathra Facade Pictured

## Ground Floor Residence



## First Floor Residence



4/5

2

2.5

2/3



# SPITERI HOMES

# The Montezuma

**Width**  
12.80m

**Length**  
21.45m

GF Residence	126.75	m <sup>2</sup>
FF Residence	144.79	m <sup>2</sup>
Porch	1.72	m <sup>2</sup>
Side Deck	14.15	m <sup>2</sup>
Deck (optional)	16.64	m <sup>2</sup>
Outdoor Living	18.30	m <sup>2</sup>
Garage	38.85	m <sup>2</sup>
<b>TOTAL</b>	<b>344.56</b>	<b>m<sup>2</sup></b>
Excluding optional Deck	<b>37.08</b>	<b>sq</b>

## The Montezuma

The Montezuma is more of a resort than house but why can't you have it all? Optional 5th bedroom or 3rd lounge you can decide how you want to live.

Plenty of outdoor living space with a side deck and an optional deck off the family room.

The decisions are limitless with a design like this.

Block sizes are estimates only and based on standard Developer setback and Rescode setback of 4 - 5m front only and 3m rear setback. Plans, facades and specifications vary depending on zone and region. All designs are priced to the traditional facade associated with the range, all other facades are considered upgrades and will incur charges unless otherwise specified.