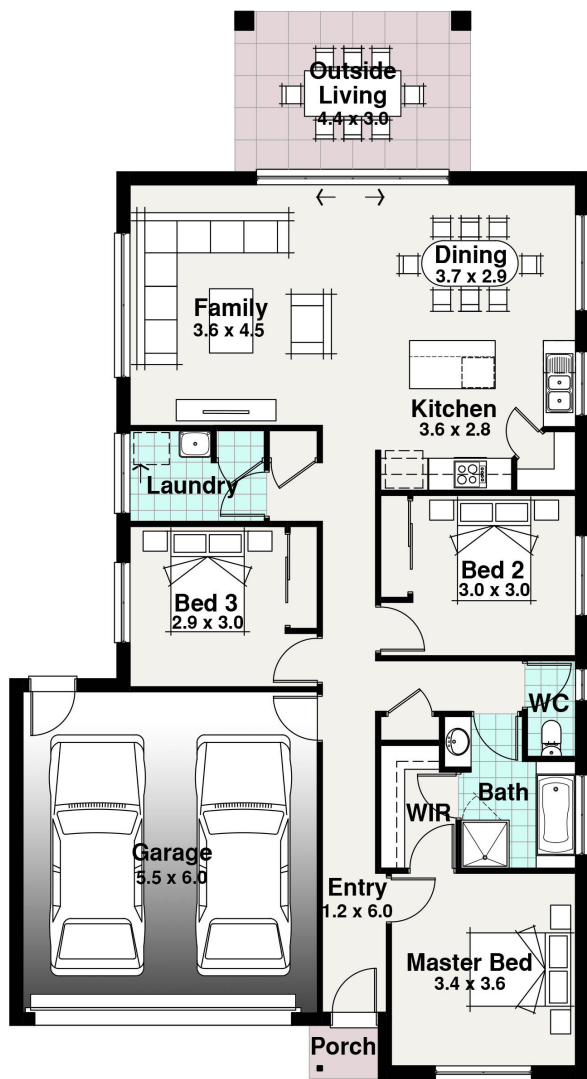








TASMAN RANGE

Quay West Facade Pictured



BLOCK 28.00m

12.00m

-  3
-  2
-  1
-  1



SPITERI HOMES

The Freycinet 3

Width 10.80m
Length 19.94m

Residence	120.89 m ²
Porch	1.27 m ²
Outside Living	13.20 m ²
Garage	36.24 m ²
TOTAL	171.60 m²
	18.46 sq

The Freycinet 3

This compact double garage design is perfect for someone with a smaller block but still wants to get a bit out of there design. Featuring 3 bedrooms is a major benefit for a house the falls under the 160m² size. The added outside living is the only difference from the Freycinet 1.