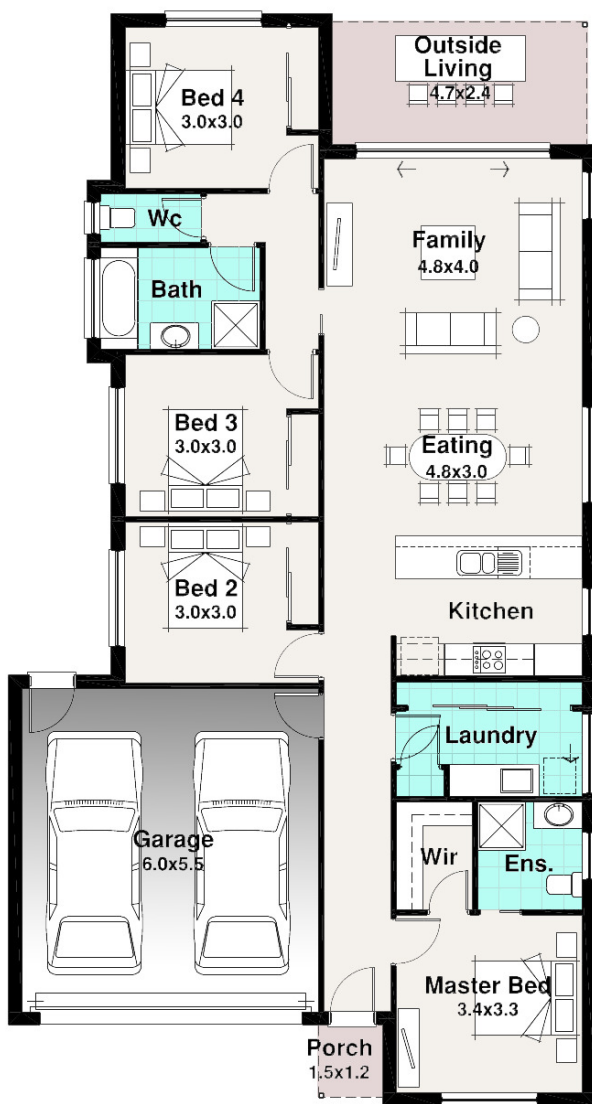








Apsley Facade Pictured

TASMAN RANGE



BLOCK 26.50m

12.00m

-  4
-  2
-  2
-  1



SPITERI HOMES

The Apsley 2

Width 10.85m
Length 20.22m

Residence	139.00	m ²
Porch	1.59	m ²
Garage	36.42	m ²
Outside Living	11.83	m ²
TOTAL	188.84	m²
	20.31	sq

The Apsley 2

The Apsley 2 has some slight modifications from the original which makes it stand out. The added outside living, increased bathroom size and toned down kitchen make this design a very cost effective one.

Block sizes are estimates only and based on standard Developer setback and Rescode setback of 4 - 5m front only and 3m rear setback. Plans, facades and specifications vary depending on zone and region. All designs are priced to the traditional facade associated with the range, all other facades are considered upgrades and will incur charges unless otherwise specified.