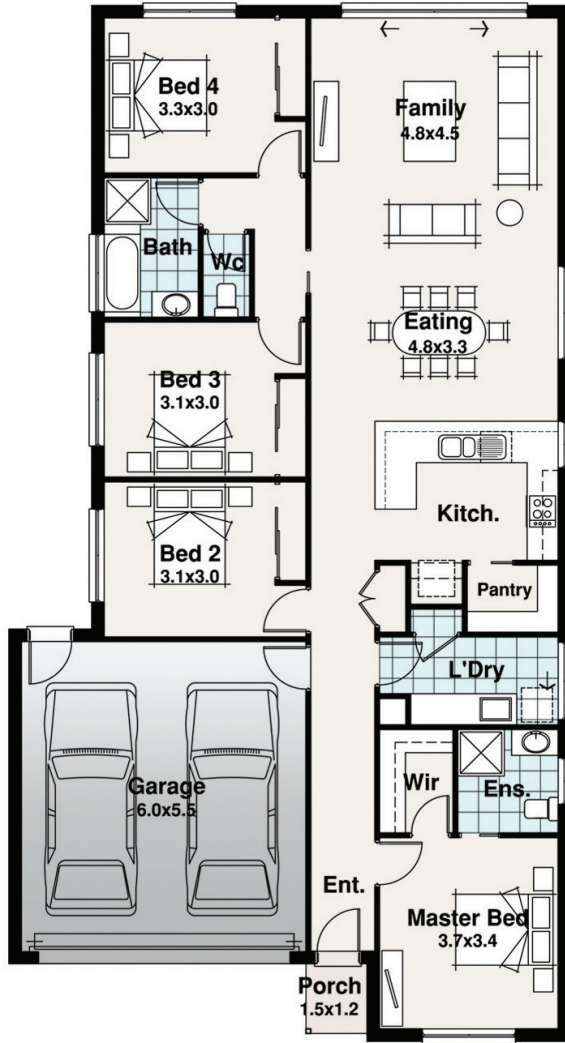








Surrey Facade Pictured

# TASMAN RANGE



BLOCK 26.00m

12.00m

-  4
-  2
-  2
-  1



## SPITERI HOMES

# The Apsley 1

**Width**      **Length**  
**10.85m**    **20.03m**

Residence	151.50	m <sup>2</sup>
Porch	1.59	m <sup>2</sup>
Garage	36.14	m <sup>2</sup>
<b>TOTAL</b>	<b>189.23</b>	<b>m<sup>2</sup></b>
	<b>20.36</b>	<b>sq</b>

## The Apsley

The Apsley is one of our more popular designs due to how the different areas compliment each other. 3 bedrooms on one side of the design and the master bedroom on the other provides privacy for you, while still offering everything you need.

Block sizes are estimates only and based on standard Developer setback and Rescode setback of 4 - 5m front only and 3m rear setback. Plans facades and specifications vary depending on zone and region. All designs are priced to the traditional facade associated with the range, all other facades are considered upgrades and will incur charges unless otherwise specified.